



BBMRI-ERIC®

Biobanking and
BioMolecular resources
Research Infrastructure

BBMRI-ERIC – A distributed RI for health research

Erik Steinfeldt

November 16th, 2017

www.bbmri-eric.eu

What is a biobank?



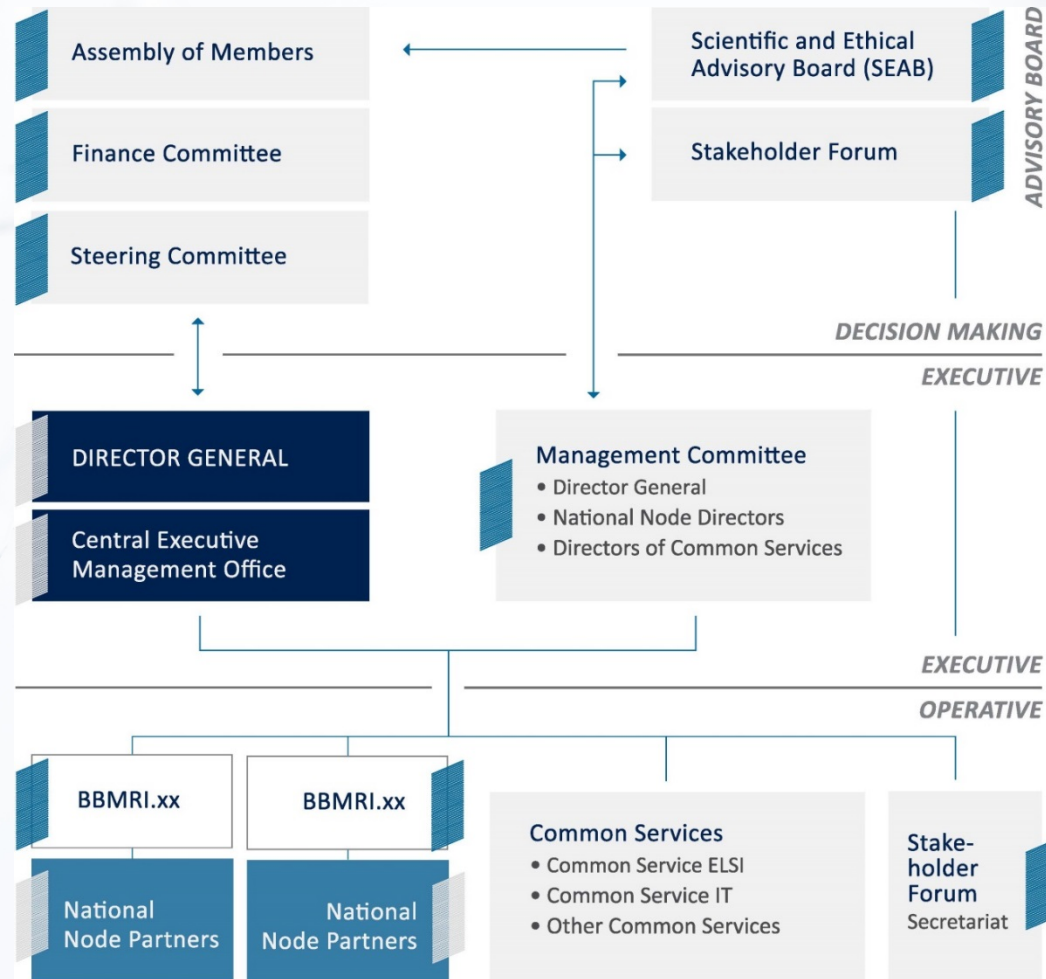
“ BBMRI-ERIC is a research infrastructure of biobanks and biomolecular resources that provides expertise and services in order to facilitate the use of European sample collections and its data for the benefit of human health”





“If you think biobanking is about hoarding, you are doing something wrong” – Greg Simon, President at Biden Cancer Initiative

Governance Structure



Membership

Members of BBMRI-ERIC

Austria
Belgium
Czech Republic
Estonia
Finland
France
Germany
Greece
Italy
Latvia
Malta
Netherlands
Norway
Poland
Sweden
United Kingdom

Observers of BBMRI-ERIC

Switzerland, Cyprus, Turkey,
IARC



Who are we serving?



- Biobankers
- Researchers
- Patients
- Clinicians
- Politicians
- Industry
- Partners
-

What do we serve?

- Ethical, Legal and Societal issue support
- IT Tools and expertise
- Quality Management Service

Common Service ELSI

- Operational since the end of 2015
- All BBMRI-ERIC Members and Observers nominated participating experts (important for national sensitivities)
- Offers practical interpretation on new legislation (e.g. FAQs GDPR)
- Monitors relevant ethical and legal frameworks in development (joint statement on the Council of Europe recommendations).
- Test runs a federated custom-based Helpdesk (providing 1:1 guidance)
- Develops ELSI guidelines for researchers (e.g. How-to-Engage with the patient organisations).



Mats Hanson (SE)



Marialuisa Lavitrano (IT)



Jasper Bobenberg (NL)



Michaela Th. Mayrhofer
BBMRI-ERIC

GDPR – 25th May 2018

**EU GDPR
2018**

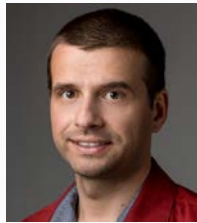


Common Service IT

- Operational since beginning 2016
- All BBMRI-ERIC Members are contributing
- Delivered core IT services:
 - Directory, Negotiator, BIBBOX, HelpDesk, CCDC, AAI
- Development of upcoming IT services:
 - Locator, data harmonization services



Michael Hummel (DE)



Petr Holub (CZ)



Quality Management Service



“Pre-analytical errors still account for nearly 60% - 70% of all problems occurring in laboratory diagnostics, most of them attributable to mishandling procedures during collection, handling, preparing or storing the specimens”.

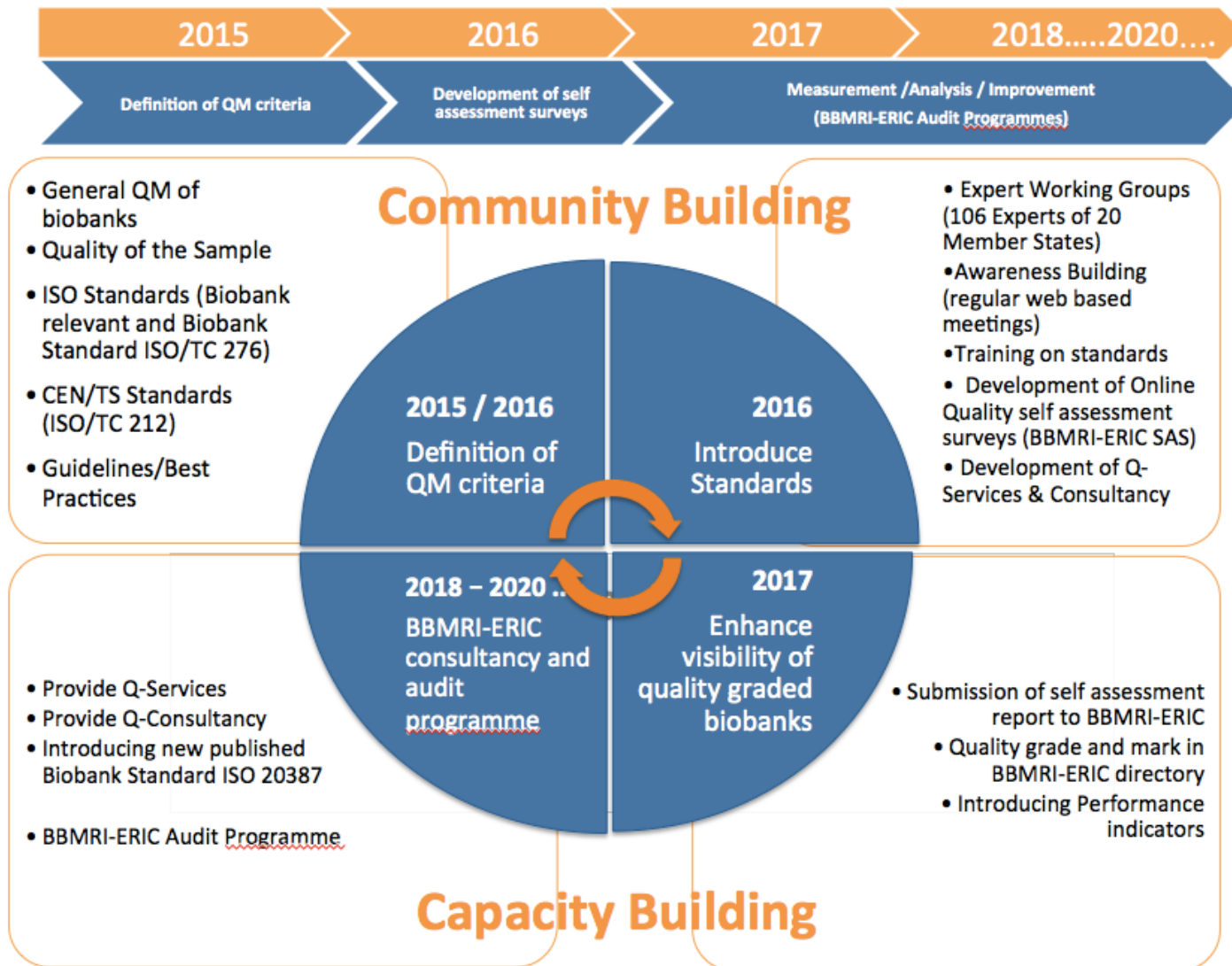


Andrea Wutte, BBMRI-ERIC

Lippi G. et al. Pre-analytical quality improvement: from dream to reality. Clin Chem Lab Med. **2011** Jul; 49(7):1113-26.



Quality Management



Enhance visibility of biobanks and sample collections

Self-Assessment Survey

Self Assessment

Molecular in vitro diagnostic examinations - Specifications for pre-examination processes for snap frozen tissue - Part 1: Isolated RNA

The integrity of molecules can change during primary sample collection, transport, storage and processing thus influencing the research results. Standardisation of the entire process from collecting sample to applicable analysis techniques is key.

The European Committee for Standardisation (CEN) published Technical Specifications to determine influencing factors and provide recommendations for the handling, documentation and processing of frozen tissue specimens intended for RNA analysis.

CEN/TS 16826-1:2015 E Molecular in vitro diagnostic examinations - Specifications for pre-examination processes for snap frozen tissue - Part 1: Isolated RNA.

For further details, please visit the CEN website.

This Self-Assessment-Survey will help you to assess and improve your sample processing.

The colour coding of the following questions asked in this survey indicated by orange that you shall meet given criterion respectively by blue that you should meet the given criterion.

True and accurate responses will give you genuine feedback on your sample collection procedures and will help you to improve certain processes in future.

Main Contact

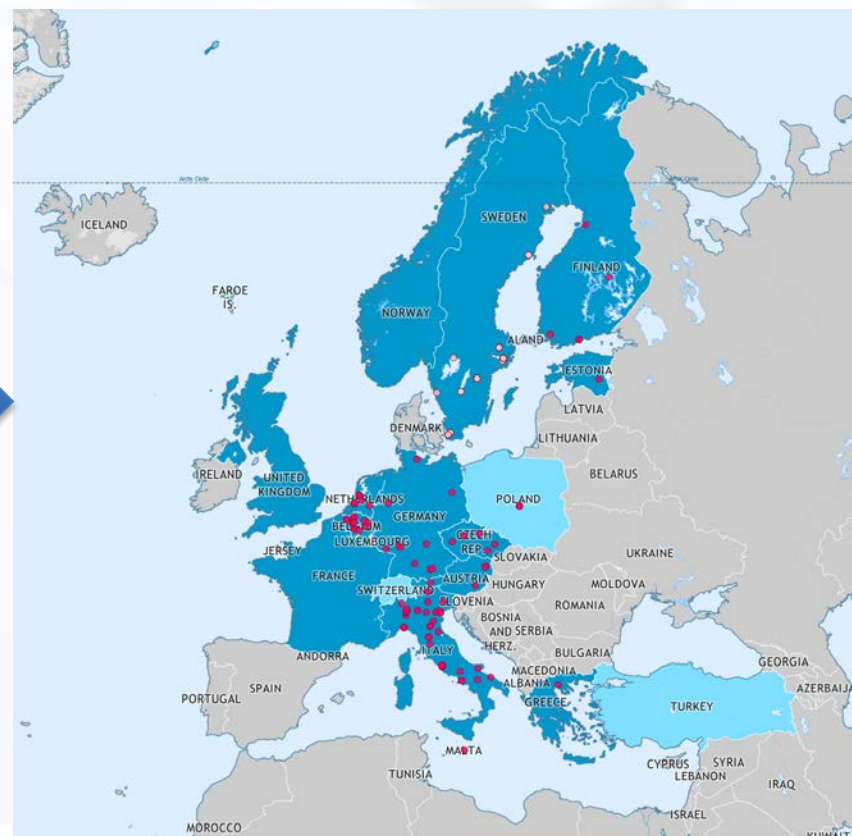
1)	Biobank	<input type="text"/>
2)	Name of contact person	<input type="text"/>
3)	E-Mail of contact person	<input type="text"/>
4)	Address	<input type="text"/>
5)	ZIP	<input type="text"/>
6)	City	<input type="text"/>
7)	Country	<input type="text"/>
8)	Phone	<input type="text"/> <small>e.g. +43 316 34 99 17</small>

Overview

9)	Biobank type	<input type="text"/>
10)	ICD-10	<input type="text"/>



BBMRI-ERIC Directory



- Key focus on providing a gateway access to European biobanks:
 - European map of biobanks – visibility and findability (currently for 520 biobanks and 1396 collections)
 - IT tools to facilitate access and negotiate with biobanks
 - Tools for quality improvements - implementation of QM requirements and assessing the quality in biobanks
 - **10 000 colorectal cancer datasets - pooling together the biobank resources** (currently 30 biobanks involved)

Thank you for your attention!



Erik Steinfelder, Director General: erik.steinfelder@bbmri-eric.eu

Web: www.bbmri-eric.eu



[@BBMRIERIC](https://twitter.com/BBMRIERIC)



[BBMRI-ERIC](https://www.linkedin.com/company/bbmri-eric)

